



# Sauter novaNet Driver

enables Niagara AX to communicate with Sauter EY3600 and EY-modulo 2 devices

**Sauter novaNet** is a proprietary protocol for Sauter EY-modulo 2 and EY3600 series devices. They include a wide range of programmable controllers:

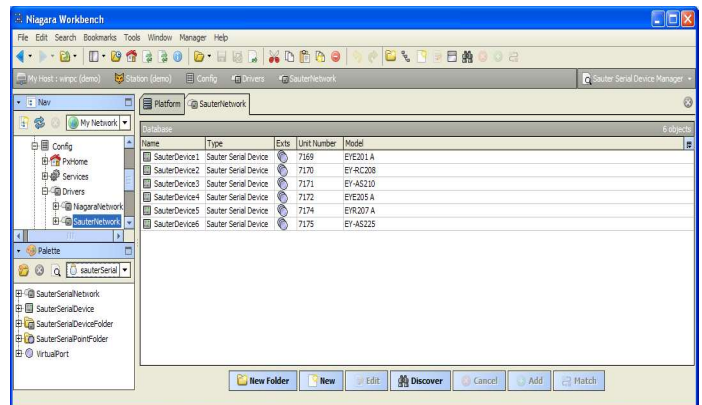
- Compact *modu2xx*
- Universal *novaFlex*
- Room *ecos*
- Legacy modular *nova106*
- Legacy compact *nova2xx*

**Niagara AX** novaNet driver is designed to enable communication between Sauter controllers and Tridium Niagara AX powered devices. It provides an efficient solution for retrofit of building management systems, facilitates seamless integration of multiple protocols and allows convenient makeover of front-end software.

NovaNet driver could communicate with Sauter controllers in two ways:

- Via serial port and Sauter EY291 router
- Via TCP/IP network and Sauter EY292 router

A single Niagara AX powered device with novaNet driver could serve as integration platform for various Sauter controllers: EY-modulo 2 (novaNet), EY-modulo 4 (LON), EY-modulo 5 (BACnet) as well as 3rd party systems (Modbus, M-Bus, SNMP).



## Key features:

- Works with all novaNet devices
- Multi-point polling optimized for scalable systems
- Communicates via serial or IP
- Enables point read, write and override
- Supports automatic device discovery
- Supports point discovery with point facets
- Discovers point meta-data, i.e. type, description
- Ideal for retrofit application

## Supported devices:

modu200	modu201	modu210
modu225	modu230	novaFlex
ecos200	ecos201	ecos202
ecos205	ecos206	ecos208
ecos209	nova106	nova 210
nova215	nova220	nova225
nova230		